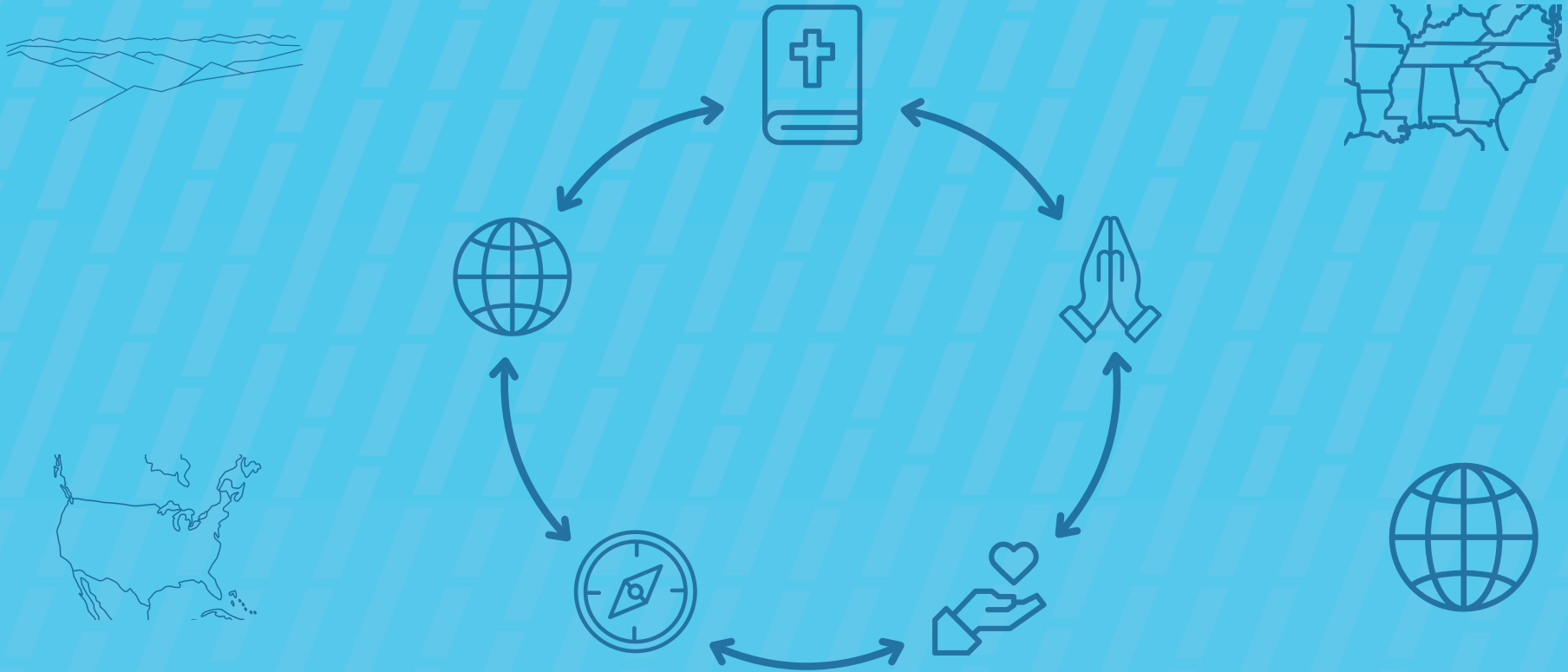


MISSIONS ADVANCEMENT



Church Contact

Name:

Phone:

Email:

Lead Pastor's Contact

Name:

Phone:

Email:

Primary Missions Contact

Name:

Phone:

Email:

PURPOSE:

- evaluate your church's missions engagement
- spur your church toward greater kingdom impact

IMB Vision:

A multitude from every language, people, tribe and nation knowing and worshipping our Lord Jesus Christ (Rev 7:9-10)

CBA MISSION

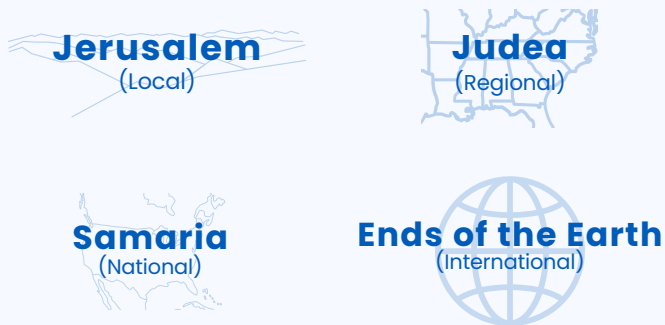
To cultivate powerful partnerships that build healthy pastors and strong churches to impact communities with the gospel

CBA VISION

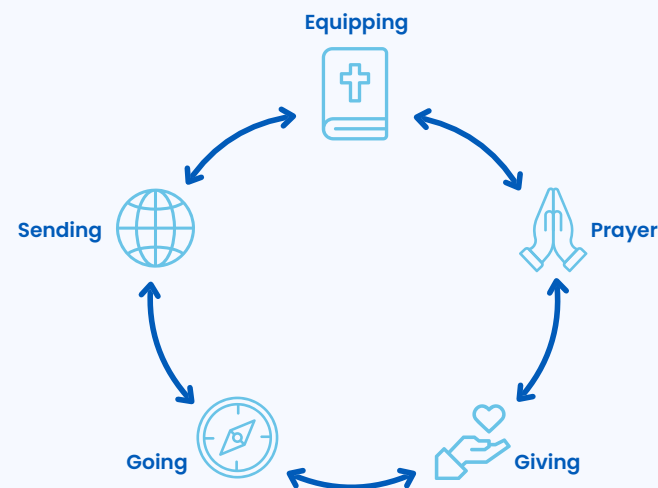
Every church bringing all the gospel to every community

Kingdom Impact

In light of Scripture's teaching on spreading God's fame throughout the earth and our Lord's commission to make disciples among all nations, these broad categories and questions help you evaluate your church's role and faithfulness in building Christ's kingdom.



"But you will receive power when the Holy Spirit comes upon you, and you will be my witnesses in Jerusalem, in all Judea and Samaria, and to the ends of the earth." (Acts 1:8)



"All authority in heaven and on earth has been given to me. Therefore go and make disciples of all nations, baptizing them in the name of the Father and of the Son and of the Holy Spirit, teaching them to observe all that I have commanded you. And behold, I am with you always, to the end of the age."
(Matt 28:18-20)



CELEBRATE



*Oh give thanks to the LORD; call upon his name; make known his deeds among the peoples!
Sing to him, sing praises to him; tell of all his wondrous works!
Glory in his holy name; let the hearts of those who seek the LORD rejoice!
Psalm 105:1-3*

Celebration is vital to God-centered missions because we are commanded to celebrate, compelled to praise, and conformed through worship.

Describe below how your church family is actively engaged in God’s mission.

Jerusalem
(Local)

Judea
(Regional)

Samaria
(National)

Ends of the Earth
(International)



Equipping



Praying



Giving



Going



Sending

KEY TERMS

The Gospel – The Church – Evangelism – Conversion – Disciple
Disciple-Making – Missionary – Calling – Missionary Team – Unreached

These biblically faithful and denominationally loyal definitions and concepts profoundly affect who we are, where we go, what we do, and how we train. Wisely applying God's Word in all of our work together necessitates the clear articulation and consistent understanding of these terms.

The Gospel

The gospel is the good news that the only true God, the just and gracious Creator of the universe, has looked upon hopelessly sinful men and women and has sent his Son, God in the flesh, to bear his wrath against sin through his substitutionary death on the cross and to show his power over sin and death through his resurrection from the grave so that everyone who turns from their sin and themselves and trusts in Jesus alone as Savior and Lord will be reconciled to God forever.

Church

A New Testament church of the Lord Jesus Christ is an autonomous local congregation of baptized believers, associated by covenant in the faith and fellowship of the gospel; observing the two ordinances of Christ, governed by his laws, exercising the gifts, rights, and privileges invested in them by his Word, and seeking to extend the gospel to the ends of the earth.

KEY TERMS

Evangelism

Evangelism is the proclamation of the gospel in the power of the Holy Spirit with the aim of persuading people to repent and believe in Christ.

Conversion

Conversion is the divinely enabled personal response of individuals to the gospel in which they turn from their sin and themselves (repent) and trust in Jesus as Savior and Lord (believe).

Disciple / Disciple-Making

Disciples are followers of Jesus, those who turn from their sin and trust in Jesus as their Savior. They have died to themselves and surrendered their lives to him as Lord. Christ now lives in them, transforming their heart at conversion, and their mind, affections, will, relationships, and purpose in increasing measure as a disciple grows through faith in Jesus as a member of his body, the church.

Disciple making is the Christ-commanded, Spirit-empowered duty of every disciple of Jesus to evangelize unbelievers, baptize believers, teach them the Word of Christ, and train them to obey Christ as members of his church who make disciples on mission to all nations.

KEY TERMS

Missionary

A missionary is a disciple of Jesus set apart by the Holy Spirit, sent out from the church to cross geographic, cultural, and/or linguistic barriers as part of a missionary team focused on making disciples and multiplying churches among all peoples and places, especially those unreached with the gospel.

Missionary Team

A missionary team is an identifiable group of disciples who meet together regularly, care for each other selflessly, and partner with one another intentionally to make disciples and multiply churches among particular unreached peoples and/or places.

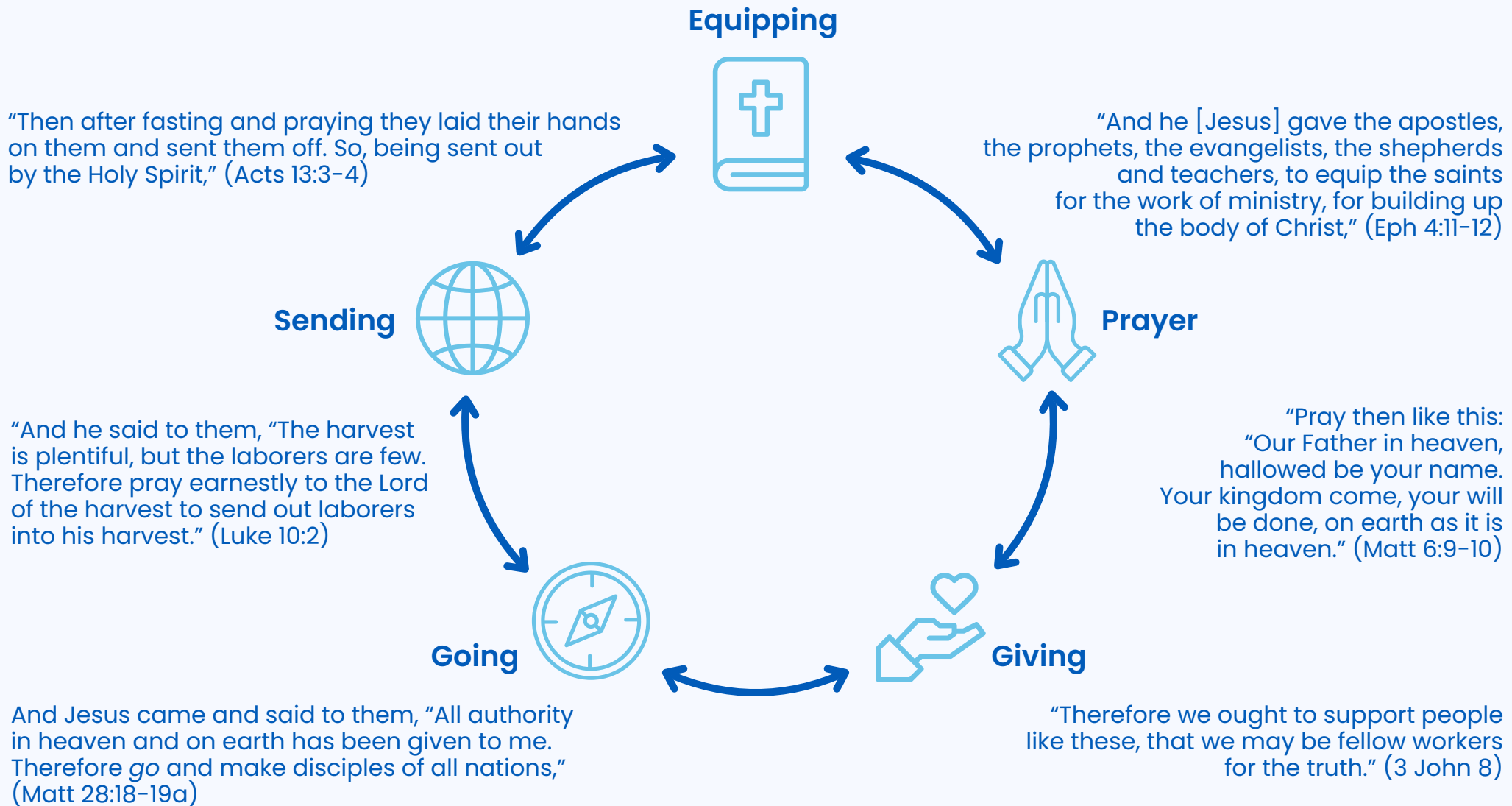
Calling

Every follower of Christ is called to salvation, whereby God graciously draws people to discipleship & church membership. Christ calls disciples to stations to exalt him on mission (family roles, singleness, membership, citizenship). Every Christian is sent by Jesus to make disciples, yet not every Christian is a missionary. All vocations are significant before the Lord, yet God calls some to specific service (pastor, missionary, etc.), discerned & affirmed individually & externally by the church.

Unreached Peoples/Places

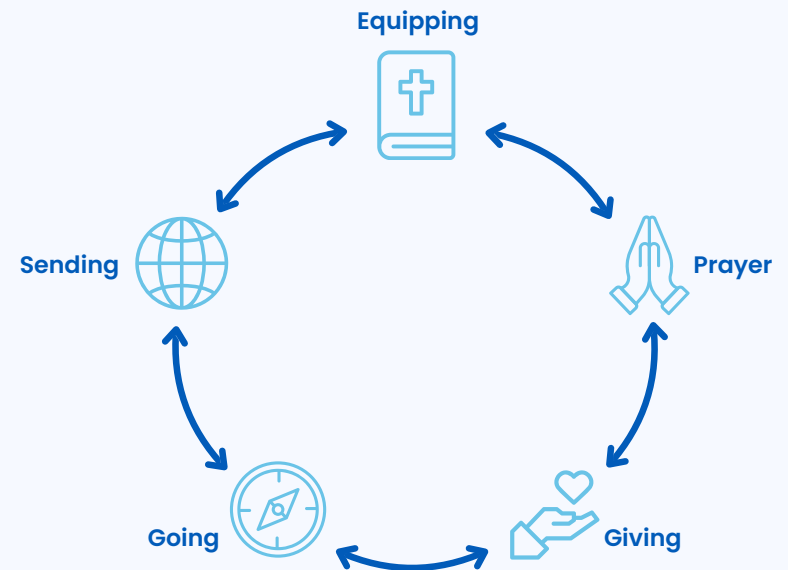
Unreached peoples and places are those among whom Christ is largely unknown and the church is relatively insufficient to make Christ known in its broader population without outside help.

Missions Engagement: Biblical Foundation



Missions Engagement Evaluation

The following questions are crafted to help you honestly evaluate your church's missional life and encourage your church toward greater engagement and faithfulness in building Christ's kingdom.



"But you will receive power when the Holy Spirit comes upon you, and you will be my witnesses in Jerusalem, in all Judea and Samaria, and to the ends of the earth." (Acts 1:8)

"All authority in heaven and on earth has been given to me. Therefore go and make disciples of all nations, baptizing them in the name of the Father and of the Son and of the Holy Spirit, teaching them to observe all that I have commanded you. And behold, I am with you always, to the end of the age." (Matt 28:18-20)

Missions Engagement: Equipping

Is your church family regularly seeing people transformed to be more like Jesus as a result of experiencing God's grace in their lives?

Does your congregation have a shared understanding of the gospel and the key terms mentioned in this evaluation?

Can your members clearly articulate the gospel with others?

Does your preaching/teaching ministry connect local outreach and global mission as part of one calling from God to take part in his mission to the world, rather than a mere activity of the church?

Do your teaching ministries integrate a biblical foundation for missions, common worldviews, world religions, world cultures, and missiological practices?

Do your various ministries encourage and provide avenues for members of all ages to use their gifting to reach others with the gospel?

Is your church allowing its internal conflict, struggles, and initiatives to keep itself from serving faithfully outside of its four walls?

How does our church leadership assess the gifts of congregation members and how they could be integrated into both local and global mission efforts?
Is our current system effective at doing this? Why or why not?

Does our church leadership share a clear, unified vision for local and global engagement?
If so, is this vision centered on and fueled by the gospel?

Who in our church is responsible for casting the vision for global mission? Are they consistently and effectively doing this?
Why or why not?

What are some of the qualities our mission leader or mission team lacks that might make them more effective?
Are there other church members who could complement our leader or join the team?

Do you host or participate in events or gatherings that cultivate missional interest? (Examples: prayer meetings, missionaries visiting, associational missions conferences, fundraisers)

Missions Engagement: Praying

How are you cultivating missional prayer and action in your personal life and family?

Are you regularly and systematically praying for local churches, ministries, and people groups in your area by name? If so, what does this look like?

How are you cultivating missional prayer and action in your members?

Do you make regularly, intentional time in your gatherings to focus on and pray for specific nations, people groups, and mission efforts?

Does your church's prayer life lead to more maturity and faithfulness among your members?

Are you praying earnestly to the Lord of the harvest to send out laborers into his harvest (Matt 9:38) and regularly calling your people to consider their place in God's global work?

How well are our disciple-making and spiritual formation ministries connected to our ministries of mission and outreach?

Is your church consistently praying for kingdom expansion? If so, what does this look like?

Do you, your church leadership, and your church overall regularly pray for God's direction for where and how to grow in maturity and serve the world on mission?

Do you intentionally incorporate moments for global missions in your gatherings?

Missions Engagement: Giving

Does your church see missional giving in merely financial terms, or as a larger scope of giving time, attention, people, and resources?

Are you supporting gospel work in the area? If so, how?

Are you financially supporting your fellow CBA churches and ministries? If so, how?

Are you giving sacrificially? (2 Cor 8:1-4)

Are your members aware of and engaged in local ministries such as CHARM, Baptist Center, Camp Tipton, ministries that serve internationals, refugees, the hurting and needy?

Does your church personally know a NAMB or IMB missionary and support them relationally, prayerfully, and financially? If so, who? If not, consider starting an ongoing relationship with a missionary family. (If your church supports missionaries from other sending organizations, please list their name and organization.)

Does your church embrace opportunities to love and serve those who will not add to your church's membership or finances?

Do your members who are not called to full-time missionary service understand their active role in sending and supporting others to get the gospel to the unreached?

Do you adequately prepare to promote, celebrate, and inspire your church family during the Lottie Moon Christmas Offering and the Annie Armstrong Easter Offering seasons?

Does your missional giving budget reflect and communicate the centrality to God's mission for the church?

Ideally, what percentage of your church's overall budget would you like to see being used to support global mission? How would your congregation feel about that?

How may your church better give of their finances, time, and resources to local and global gospel ministry?

Missions Engagement: **Going** (short-term)

How are you preparing & training to share the gospel in the missions context you are going to?

Does your congregation understand that the gospel must be proclaimed, and do they know how to share their faith?

What pre-trip training/preparation are your teams pursuing in the areas of prayer, culture, language, and Bible study?

Are your mission teams being prepared spiritually, theologically, contextually, physically, and emotionally for the work?

Is the missionary/church you are planning to partner with connected with an ongoing gospel effort of evangelism, discipleship, and church planting?

What key gospel passages and Bible stories are your mission teams memorizing to share with others in the missions context?

What gospel-centered resources are you preparing to utilize and possibly distribute?

Are your current or potential partnerships seen as a long-term investments? (relationship, support, goals, prayer)

How can your team engage in regular follow-up with the missionaries/church after returning home?

Is the work your mission team is engaged with encouraging the missionaries/churches and helping advance their work and the gospel?

Does your church understand the value of short-term missions, as it can expose them to needs, edify them spiritually, and provide encouragement for long-term missionaries?

Does your mission team understand the sacrifice, worldview, context, challenges, goal, and reward of their work?

Missions Engagement: Sending

(long-term)

Missionaries are bred in healthy local churches who are exalting Christ, growing in Christ, and intentionally loving and discipling on another. Potential church leaders and missionaries should already be evangelizing and making disciples and should be discerned based on their godly character, spiritual maturity, Bible knowledge, language-learning ability, strength of relationships, and physical and emotional health.

Are you identifying members who may be called to missions?

Is your church leadership intentionally training and discipling future church leaders and missionaries? How so?

How are you helping prepare long-term missionaries spiritually, physically, theologically, and emotionally?

Are there key individuals in your church committed to intentional, ongoing support for missionaries? (regularly communication, prayer, reports, etc.)

How are you providing ongoing support to your missionaries? (relational support, encouragement, logistical aid, accountability, financial advice, etc.)

How is your church prepared to receive missionaries when they come home for the short or long term? (housing, car, emotional support, etc.)

Though not all Christians are missionaries, all Christians are sent by Christ to be on mission. Do your members understand their active, daily role in God's mission and their role in supporting those called to long-term, cross-cultural gospel service?

Do church members of all ages understand the marketplace mission opportunities available, using their current giftings to advance the gospel cross-culturally? (teachers, students, retirees, business, finance, etc.)

How is your church regularly participating in, praying for, and celebrating the work of your long-term missionaries/mission teams?



NEXT STEPS



What action steps has God impressed upon you as you have considered your church's missions engagement?

Jerusalem (Local)

Consider how to regularly integrate missions moments into your church worship gatherings, prayer life, & teaching ministry.

Consider how to teach & train your members on a biblical theology of missions, key gospel passages & terms, how to share their faith, and cultural/missiological studies.

Commission church members to regularly serve the community through partnering with other churches and CBA ministries.

Alongside mission leaders, establish a plan for equipping and encouraging short-term mission volunteers before, during, and after each mission effort.

Judea (Regional)

Samaria (National)

Ends of the Earth (International)

Identify mission leaders who will provide ongoing oversight and encouragement to the church's missional life.

Create a plan for identifying, training, sending, and supporting missionaries from your congregation, perhaps with assistance from other churches and the CBA.

Consider an on-going partnership in prayer, giving, going, and relational support of a NAMB and IMB missionary/family.

Set sacrificial financial goals when giving to the Lottie Moons Christmas Offering and the Annie Armstrong Easter Offering.



RESOURCES

(to equip your church)



bbcmaryville.org/institute



imb.org/training/namb.net/resources



"Before You Share Your Faith" by Matt Smethurst



IMB Pray
(Web / App)



Unreached of the Day
(Web / App)



NAMB Pray
(namb.net/pray)



Operation World
(Web / App)



Support a NAMB or IMB Missionary/Family



Annie Armstrong Easter Offering®
FOR NORTH AMERICAN MISSIONS



The Golden Offering for Tennessee Missions



Chilhowee Baptist Center



charmsmokies.com



tndisasterrelief.org



imb.org/trips



INTERNATIONAL MISSION BOARD
imb.org/go



North American Mission Board
namb.net/go



crosscon.com



ethnos360.org



cbalive.org